



**Instruction & Specification Manual for Permanent Fall Arrest Anchors:
#PRA-0003-001 for Installation on Metal Frame Buildings
-Addendum-**

Purpose:

This addendum is for the installation of UST #PRA-0003-001 anchorage point onto metal frame/metal roof structures for a permanent fall arrest anchor point. Please refer to the installation instructions below regarding the use of the supplied 5/8" attachment bolt. Tables and charts are provided for reference. #PRA-0003-001 is supplied with a 5/8" x 4" bolt that has been hot-dipped galvanized. The bolt can be installed inverted through the metal truss and penetrates the roof decking or standard installation with the nut in the inside of the building envelope. The anchor is installed on the roof deck and is sealed with a butyl membrane. The anchor is attached with a 5/8" hot dipped galvanized lock washer and 1 or 2 ea. 5/8" x 11 thread per inch nuts. UST warrants waterproofing and flashing base for 20 years. This addendum is to be used in conjunction with the UST Instruction & Specification Manual for #PPA-0001-001 available from www.utilityanchor.com or by calling us at 425.577-3190.

Installation:

Installation of the UST #PRA Series of anchors is done in 4 phases when attaching to a metal truss with roofing applications. They are:

Phase 1 – Drilling the attachment bolt hole: Use a 5/8" drill and go through the truss, metal decking, vapor shield and roofing.

Phase 2 – Installation of anchor attachment bolt: Install a 5/8" washer on the bolt and place the bolt through the truss. Install the other 5/8" washer and a 5/8" nut to secure the bolt onto the truss. Before you tighten the nut, install the spacer sleeve and a 5/8" washer on top of the spacer. Now tighten the nut.

Phase 3 – Installation of roof waterproofing membrane. Remove the backing tape from the butyl tape and place over the bolt that is penetrating the roof. Push the tape over the bolt.

Phase 4 – Installation and attachment of anchor: Install the anchor over the attachment bolt with the D-ring facing down slope. Next place the 5/8" lock washer on top of the anchor and install a 5/8" nut. Tighten the nut until the lock washer compresses completely. Install the last 5/8" nut on top of the other nut (military installation). This is the locking nut to ensure that the anchor is secure.

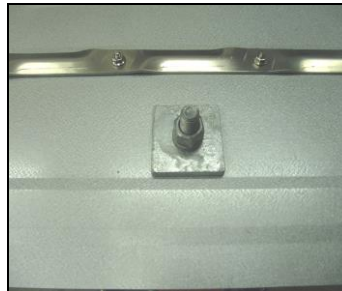
Final Layering - Bolt/Washer/Truss/Washer/Nut/Spacer/Washer/Metal Decking/Vapor Barrier/Metal Roofing/Butyl/Anchor/Lock Washer/Nut/Nut



MUTT & Mounting Hardware



Roofing & Decking – 5/8" hole



Inside view w/ backer plate



Roof MUTT on completed roof

Anchor Specifications:

Anchor Plate Material: 11 gauge hot-rolled steel hot-dipped galvanized or zinc coated. Rated for 5,000 pounds fall arrest
 Anchor D-Ring: Drop forged, proof loaded, hot dipped galvanized or zinc coated. Rated for 5,000 pounds/22.4 kn
 Anchor Coating: Hot-Dipped Galvanized or Zinc Coating ASTM Standards

5/8" Attachment Bolt Specifications:

Bolt Material: A-307 Steel, Full Thread
 Bolt Diameter: 5/8" (15.9mm)
 Bolt Coating: Hot-Dipped Galvanized or Zinc Coated
 Bolt Proof Load: 12,400 pounds
 Bolt Tensile Strength: 16,700 pounds
 Install Torque: 107 lb. ft.

Butyl Tape Waterproofing Specifications:

Tensile Strength: 15 lb. per sq. in. ASTM D-412
 Cone Penetration: 11 mm @ 73°F ASMT D-217
 Life Expectancy: 20 years
 Sag: 1/64" @ 140°F AAMA 807.1-85 after 24 hours
 Low Temperature: Passed 1" dia. Mandrel @ -40°F
 Fluid Migration: AAMA 807.1, 1.2.4.7, no voids, cracks or separation
 Weathering: No discoloration after 1,800 hours of direct exposure
 Force to Compress: 54 lb. per sq. in. @ 77°F
 Water Resistance: Passed AAMA 807.1-85. No presence of voids, cracks, separation or breakdown